

THE UNIVERSITY OF SOUTH CAROLINA

PROJECT NO.: H27-6017-PG-D

HOBCAW EDUCATION CENTER [NERR]: WATER LINE EXTENSION AND NEW FIRE HYDRANT

DECEMBER 03, 2012



22 HOBCAW ROAD, GEORGETOWN, SC 29440

BID DOCUMENTS

ARCHITECTURAL

LS3P ASSOCIATES, LTD.
701-A Lady Street
Columbia, SC 29201
Tel: (803) 765-2418
Fax: (803) 765-2419

CIVIL ENGINEER

SEAMON WHITESIDE & ASSOC.
501 Wando Park Blvd, Suite 200
Mount Pleasant, SC 29464
Tel: (803) 884-1667
Fax: (803) 884-6944

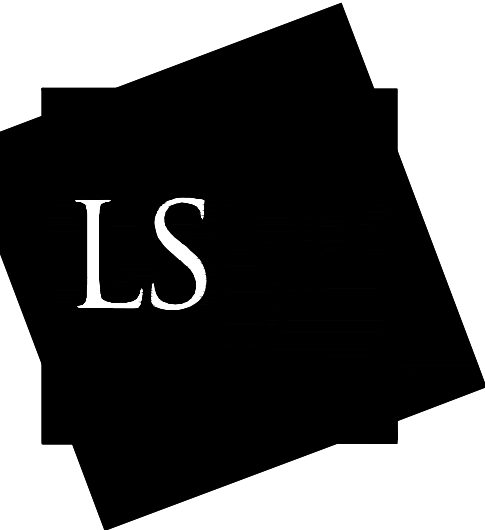
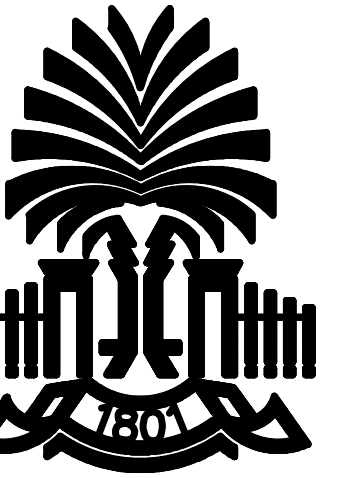
SURVEYING

ROBERT L BELLAMY & ASSOC.
4706 Oleander Drive
Myrtle Beach, SC 29577
Tel: (843) 449-9453
Fax: (843) 449-8359

HOBCEW
EDUCATION
CENTER [NERR]:

WATER LINE
EXTENSION
AND NEW FIRE
HYDRANT

THE BELLE W. BARUCH
FOUNDATION
&
THE UNIVERSITY OF
SOUTH CAROLINA



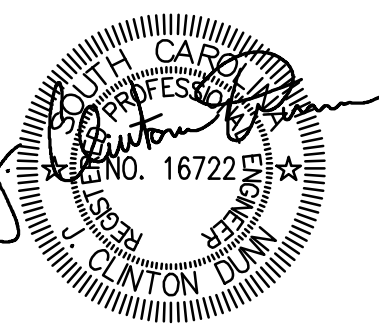
LS3P ASSOCIATES LTD.
701-A LADY STREET, COLUMBIA SC 29201
TEL. 803.765.2418 FAX 803.251.4769
WWW.LS3P.COM

Seamon Whiteside + ASSOCIATES
Civil Engineering Urban Design
607 Pleasanton Street, Suite 3109
Greenville, SC 29602-3319
864.298.0534 (F) 864.298.8018

Land Planning Landscape Architecture
501 Wando Park Blvd., Suite 200
Mount Pleasant, SC 29464-7849
843.884.1667 (F) 843.884.6944

MEMBERS OF THE AMERICAN INSTITUTE OF ARCHITECTS
COPYRIGHT 2012 ALL RIGHTS RESERVED
PRINTED OR ELECTRONIC DRAWINGS AND
DOCUMENTATION MAY NOT BE REPRODUCED
IN ANY FORM WITHOUT WRITTEN PERMISSION
FROM LS3P ASSOCIATES LTD.

REVISIONS:
1. 11.18.12 GOWSD COMMENTS REVISIONS jt



PROJECT: 2402-062141
DATE: DECEMBER 3, 2012
DRAWN BY:
CHECKED BY:

SHEET 1 OF 6

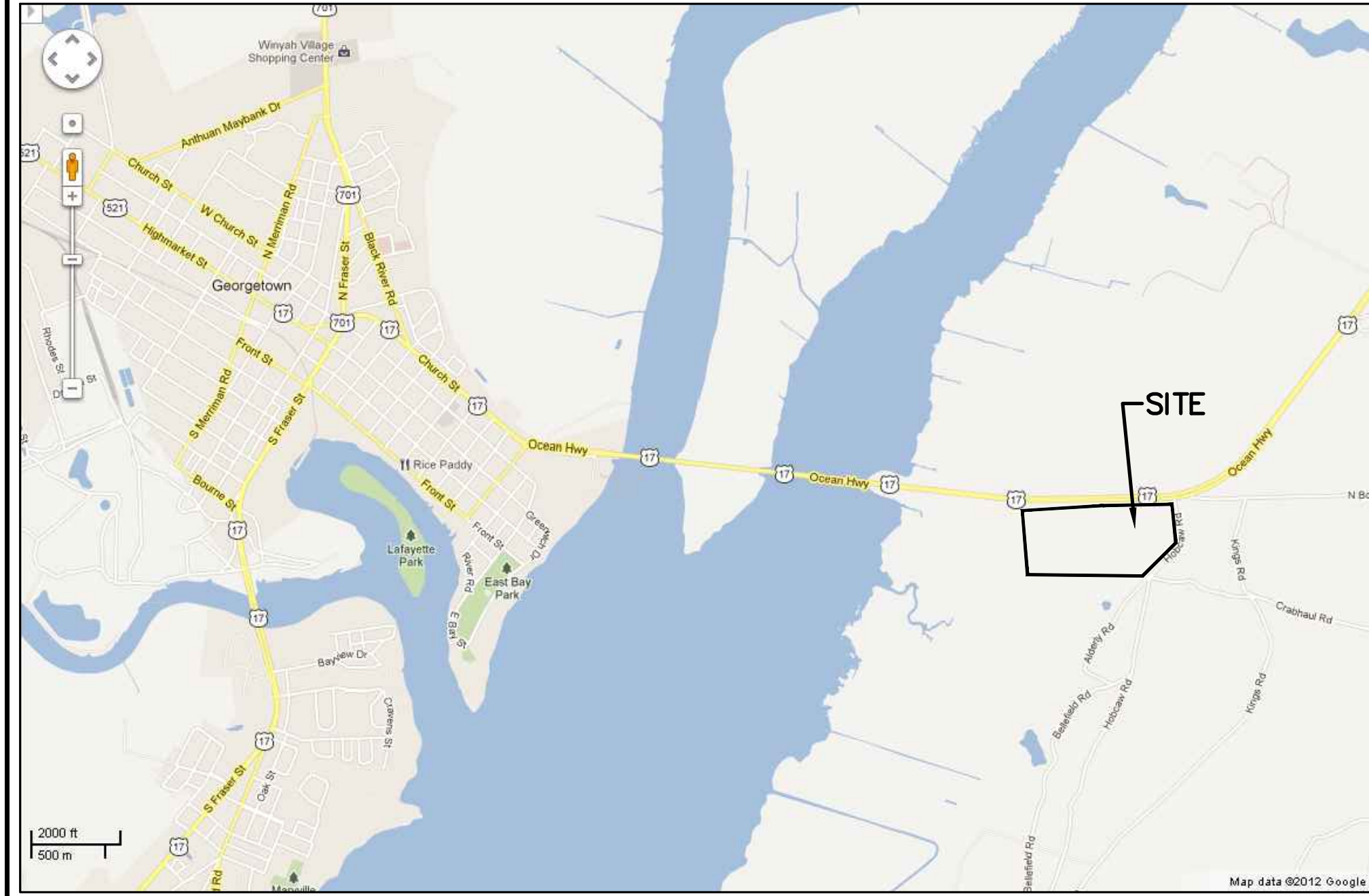
TITLE SHEET

SOLUTIONS THROUGH LISTENING
SERVICE BY DESIGN
BID DOCUMENTS

WATER MAIN INSTALLATION

THE UNIVERSITY OF SOUTH CAROLINA

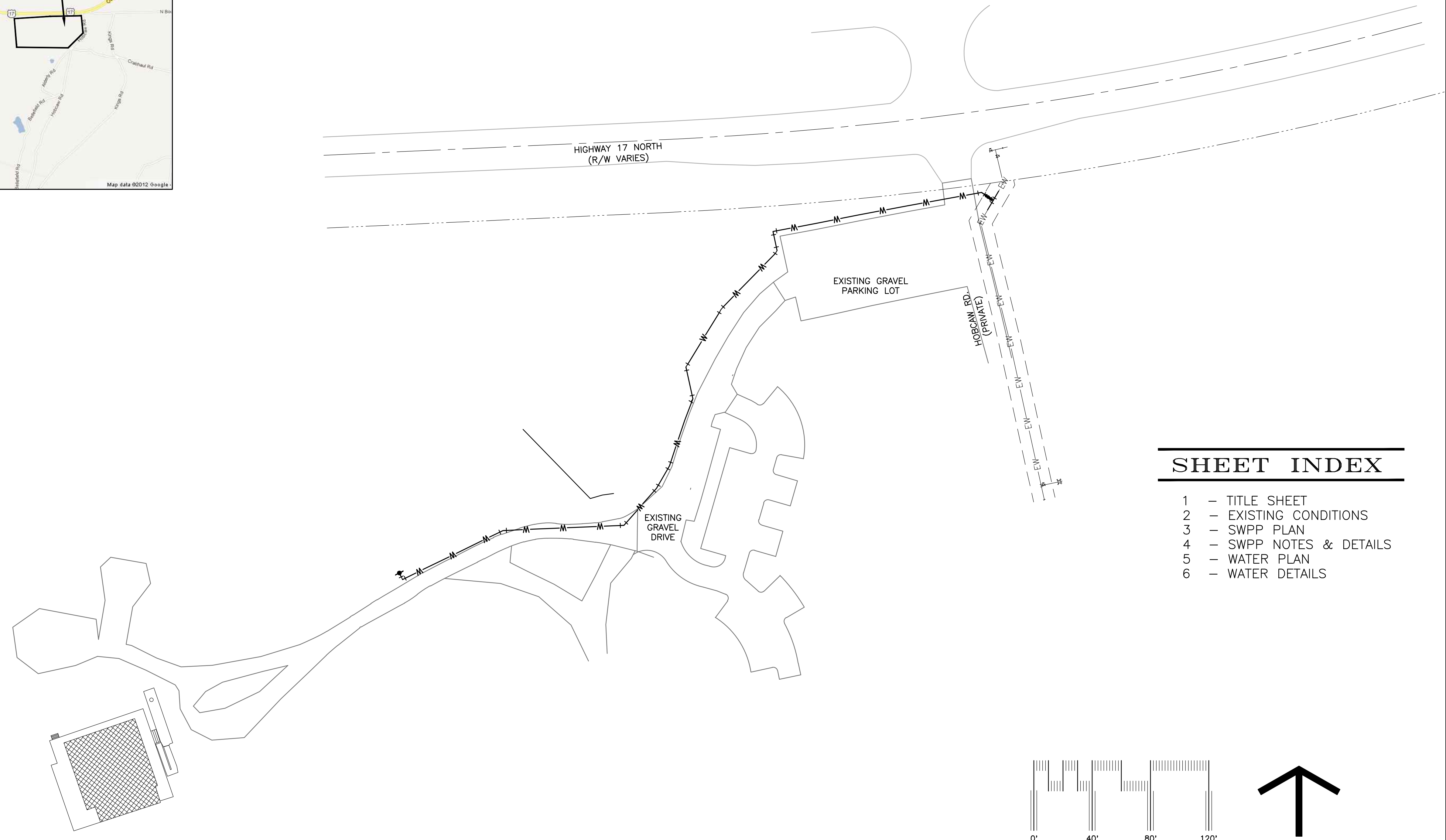
GEORGETOWN, SC



LOCATION MAP (NOT TO SCALE)

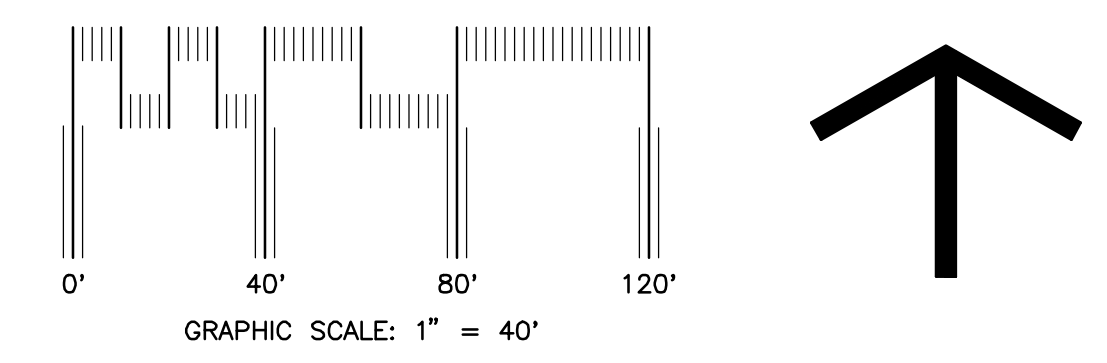
PROJECT TEAM

PROPERTY OWNER	THE BELLE W. BARUCH FOUNDATION 22 HOBCEW RD. GEORGETOWN, SC 29440 GEORGE CHASTAIN PHONE: (843)904-9010
DEVELOPER	THE UNIVERSITY OF SOUTH CAROLINA 743 GREEN ST. COLUMBIA, SC 29208 GENE BOBROW PHONE: (803)777-4569
ENGINEER	SEAMON, WHITESIDE, & ASSOCIATES, INC. 501 WANDO PARK BLVD., STE 200 MT. PLEASANT, SC 29464 SARAH MOORE PHONE: (843)884-1667



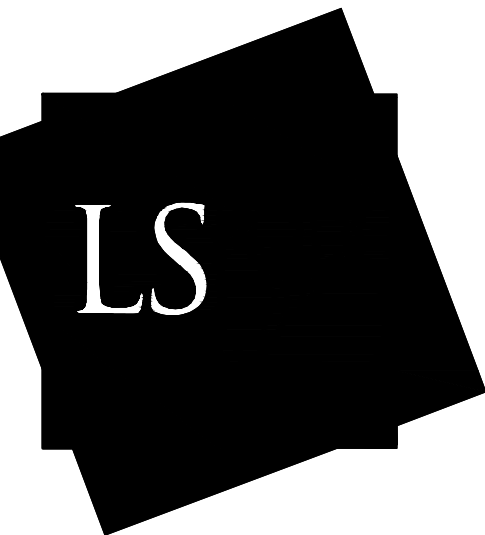
SHEET INDEX

- 1 - TITLE SHEET
- 2 - EXISTING CONDITIONS
- 3 - SWPP PLAN
- 4 - SWPP NOTES & DETAILS
- 5 - WATER PLAN
- 6 - WATER DETAILS



THIS DRAWING SHALL NOT BE REPRODUCED IN ANY MANNER OR USED FOR ANY PURPOSE WITHOUT WRITTEN PERMISSION

COPYRIGHT © SEAMON, WHITESIDE & ASSOCIATES, INC.



Seamon Whiteside + ASSOCIATES

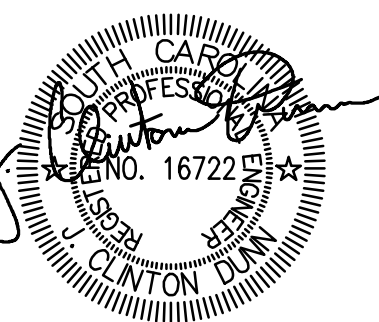
Land Planning Landscape Architecture Urban Design
Civil Engineering

501 Midlands Park Blvd., Suite 200
Mount Pleasant, SC 29664-7849
843.884.1667 (F) 843.884.6944

607 Pinckney Street, Suite 1100
Greenville, SC 29601-3319
864.298.0534 (F) 864.298.8018

MEMBERS OF THE AMERICAN INSTITUTE OF ARCHITECTS
COPYRIGHT 2012 ALL RIGHTS RESERVED
PRINTED OR ELECTRONIC DRAWINGS AND
DOCUMENTATION MAY NOT BE REPRODUCED
IN ANY FORM WITHOUT WRITTEN PERMISSION
FROM LS3P ASSOCIATES LTD.

REVISIONS:
1. 11.18.12 GOWSD COMMENTS REVISIONS jrt



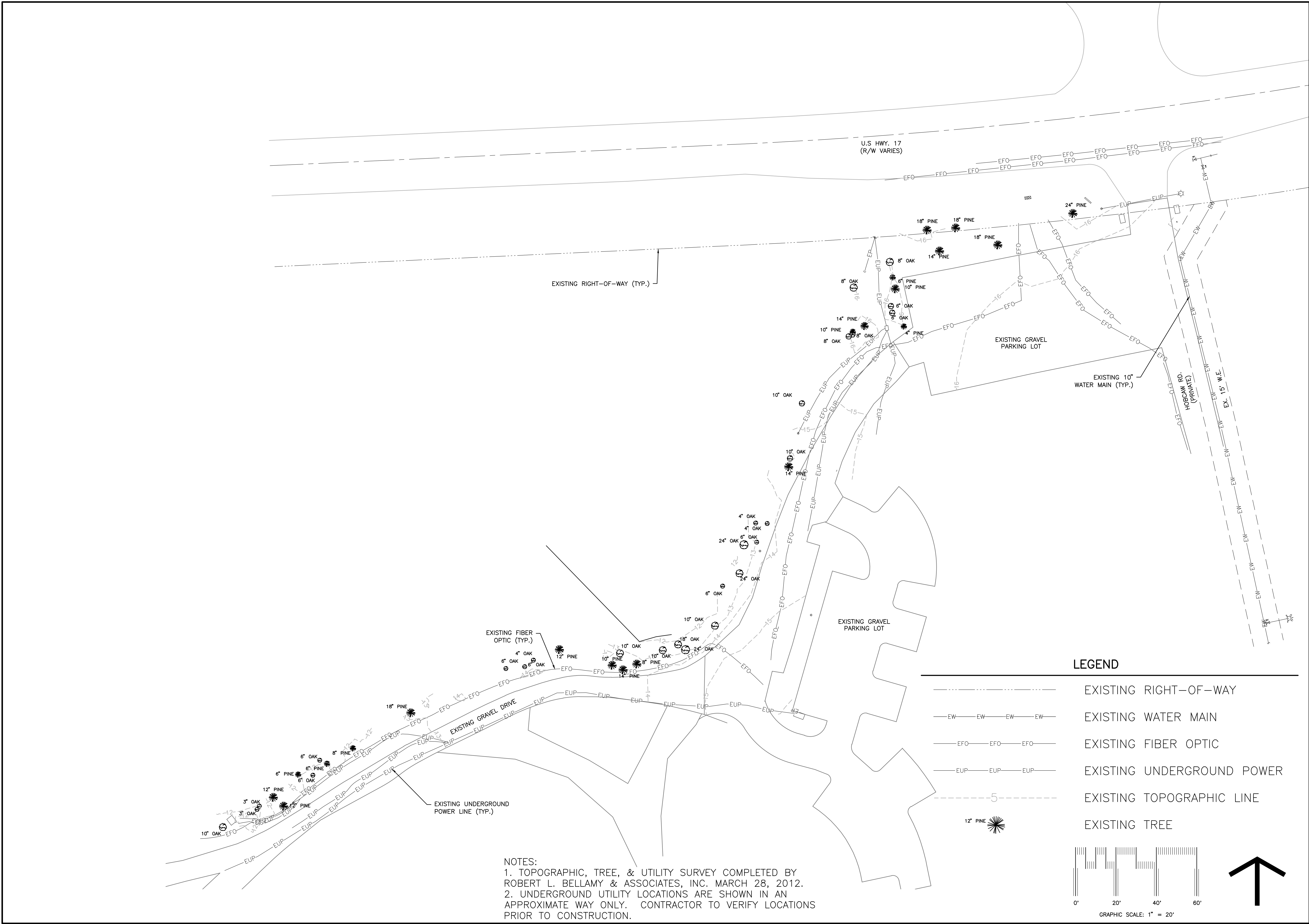
PROJECT: 2402-062141
DATE: DECEMBER 3, 2012
DRAWN BY:
CHECKED BY:

SHEET 2 OF 6

EXISTING
CONDITIONS

THIS DRAWING SHALL NOT BE REPRODUCED IN ANY MANNER OR USED FOR ANY PURPOSE WITHOUT WRITTEN PERMISSION

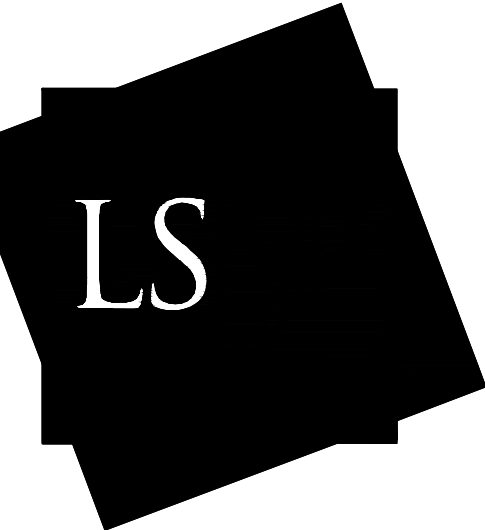
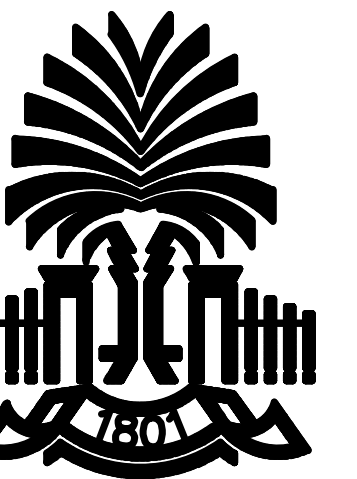
COPYRIGHT © SEAMON, WHITESIDE & ASSOCIATES, INC.



E
D
C
B
A

1 2 3 4 5 6

1 2 3 4 5 6



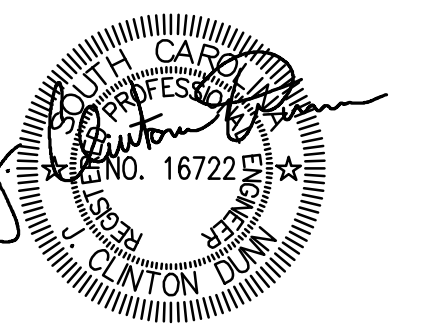
Seamon Whiteside + ASSOCIATES
Civil Engineering
607 Pleasanton Street, Suite 1109
Greenville, SC 29602-3319
864.298.0534 (F) 864.298.8018

Land Planning
501 Midlands Park Blvd., Suite 200
Mount Pleasant, SC 29564-7849
843.884.1667 (F) 843.884.6944

Landscape Architecture
Urban Design

MEMBERS OF THE AMERICAN INSTITUTE OF ARCHITECTS
COPYRIGHT 2012 ALL RIGHTS RESERVED
PRINTED OR ELECTRONIC DRAWINGS AND DOCUMENTATION MAY NOT BE REPRODUCED IN ANY FORM WITHOUT WRITTEN PERMISSION FROM LS3P ASSOCIATES LTD.

REVISIONS:
1. 11.18.12 GOWSD COMMENTS REVISIONS jrt



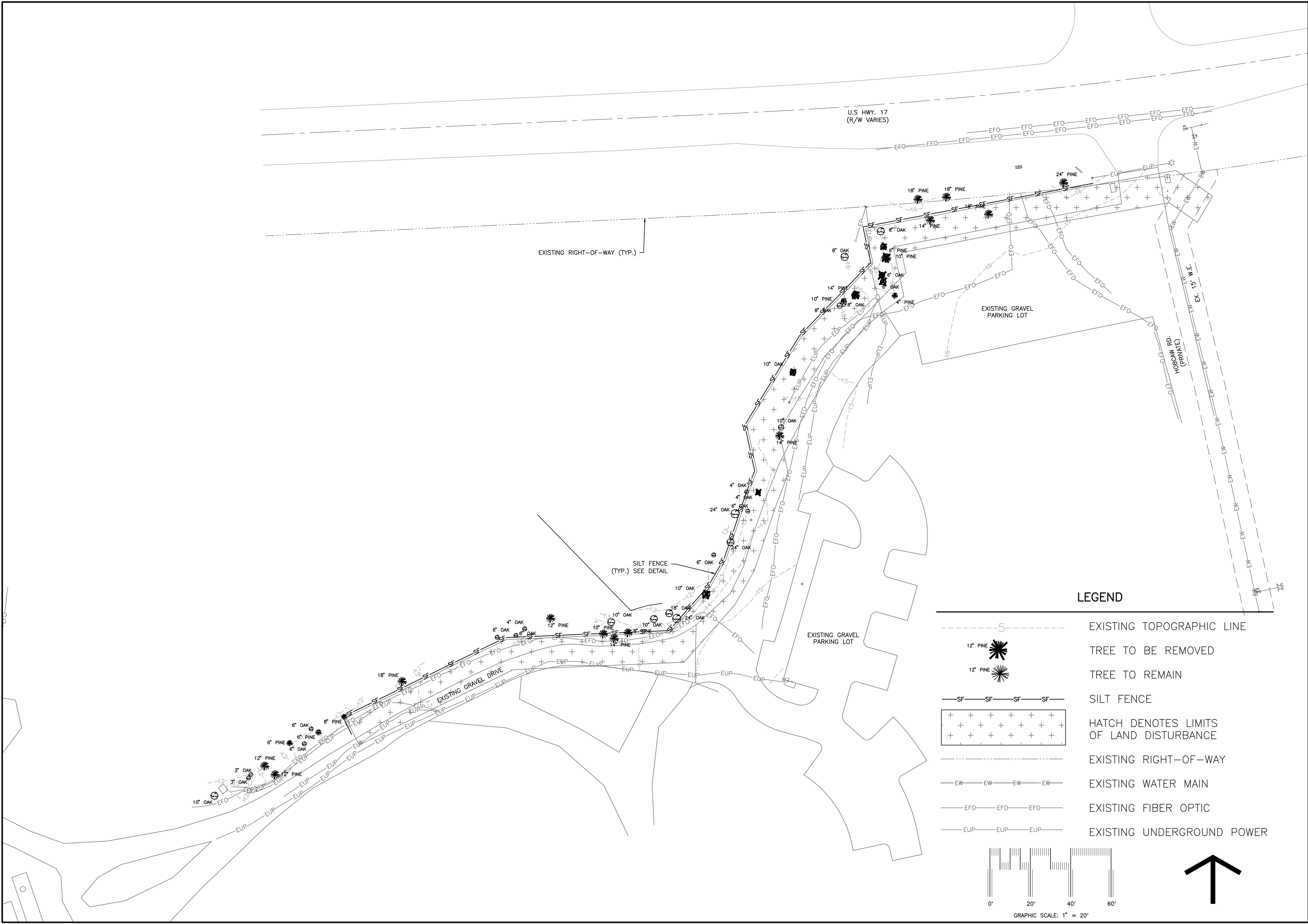
PROJECT: 2402-062/41
DATE: DECEMBER 3, 2012
DRAWN BY:
CHECKED BY:

SHEET 3 OF 6

SWPP PLAN

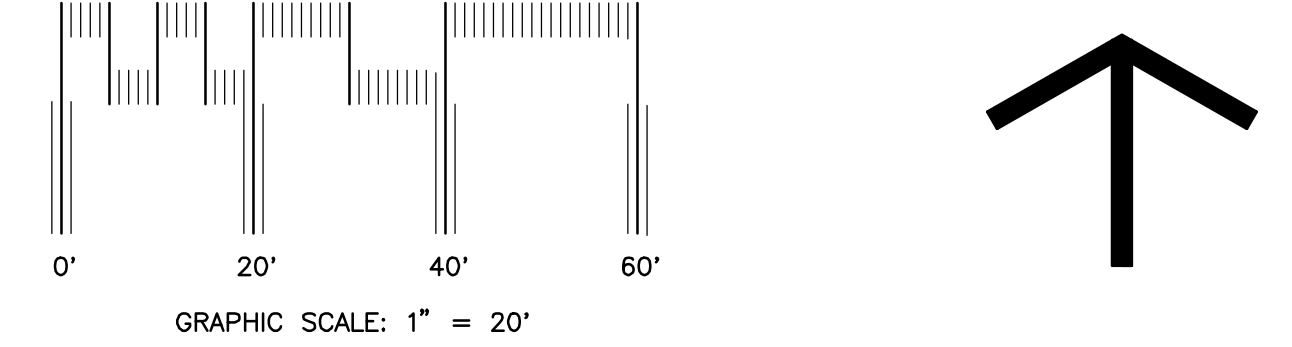
THIS DRAWING SHALL NOT BE REPRODUCED IN ANY MANNER OR USED FOR ANY PURPOSE WITHOUT WRITTEN PERMISSION

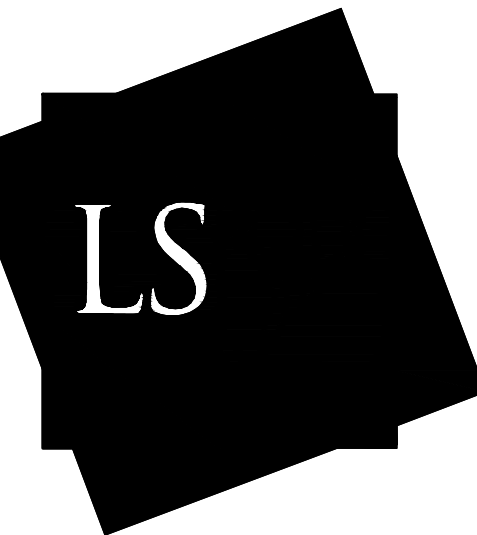
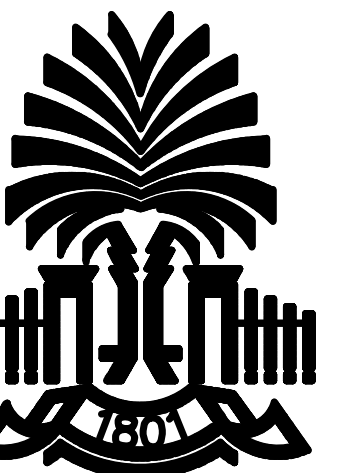
COPYRIGHT © SEAMON, WHITESIDE & ASSOCIATES, INC.



LEGEND

- EXISTING TOPOGRAPHIC LINE
- TREE TO BE REMOVED
- TREE TO REMAIN
- SILT FENCE
- HATCH DENOTES LIMITS OF LAND DISTURBANCE
- EXISTING RIGHT-OF-WAY
- EXISTING WATER MAIN
- EXISTING FIBER OPTIC
- EXISTING UNDERGROUND POWER



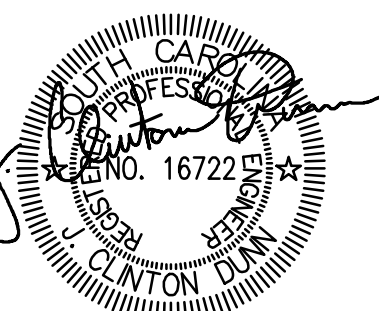


SeamonWhiteside
+ ASSOCIATES
Civil Engineering Urban Design
607 Pinckney Street, Suite 1100
Greenville, SC 29601-3319
864.296.0534 (F) 864.296.8018

Land Planning Landscape Architecture
501 Midlands Park Blvd., Suite 200
Mount Pleasant, SC 29464-7849
843.884.1667 (F) 843.884.6944

MEMBERS OF THE AMERICAN INSTITUTE OF ARCHITECTS
COPYRIGHT 2012 ALL RIGHTS RESERVED
PRINTED OR ELECTRONIC DRAWINGS AND
DOCUMENTATION MAY NOT BE REPRODUCED
IN ANY FORM WITHOUT WRITTEN PERMISSION
FROM LS3P ASSOCIATES LTD.

REVISIONS:
1. 11.18.12 COWS COMMENTS REVISIONS jt



PROJECT: 2402-062141
DATE: DECEMBER 3, 2012
DRAWN BY:
CHECKED BY:

SHEET 6 OF 6

WATER
DETAILS

THIS DRAWING SHALL NOT BE REPRODUCED IN ANY MANNER OR USED FOR ANY PURPOSE WITHOUT WRITTEN PERMISSION

COPYRIGHT © SEAMON, WHITESIDE & ASSOCIATES, INC.

				<p>GEORGETOWN COUNTY WATER & SEWER DISTRICT TYPICAL FIRE HYDRANT INSTALLATION - SECTION DATE: _____ SCALE: _____ NO. 11 - W DRAWN: _____ CHECKED: _____</p>
X	X	X	1	FIRE HYDRANT (NOT TO SCALE)
				<p>GEORGETOWN COUNTY WATER & SEWER DISTRICT LINE & VALVE MARKER DATE: _____ SCALE: _____ NO. 12 - W DRAWN: _____ CHECKED: _____</p>
X	X	X	2	LINE & VALVE MARKER (NOT TO SCALE)
				<p>GEORGETOWN COUNTY WATER & SEWER DISTRICT TYPICAL LOCATOR WIRE INSTALLATION - SECTION DATE: _____ SCALE: _____ NO. 12 - W DRAWN: _____ CHECKED: _____</p>
X	X	X	3	TYPICAL LOCATOR WIRE INSTALLATION (NOT TO SCALE)
				<p>EZ ROLL GRAVEL PAVING SYSTEM BY NDS, INC. COLOR AS SELECTED BY ARCHITECT FROM STANDARD RANGE. FILL WITH CONSOLIDATED #789 STONE. INSTALL PER MANUFACTURER'S WRITTEN INSTRUCTIONS.</p> <p>6" COMPACTED THICKNESS OF SANDY GRAVEL BASE COURSE. SEE "EARTH MOVING" SPECIFICATION SECTION FOR MATERIAL, GRADATION, AND COMPACTION REQUIREMENTS.</p> <p>SEPARATION (WOVEN) GEOTEXTILE FABRIC (SEE SPECS)</p> <p>PREPARED SUBGRADE (SEE NOTE #1)</p> <p>NOTES: 1. CONTRACTOR IS SPECIFICALLY CAUTIONED NOT TO COMPACT SUBGRADE BENEATH POROUS PAVEMENTS BEYOND THAT SPECIFIED BY THE GEOTECHNICAL TESTING AGENCY. SEE SPECIFICATIONS FOR ADDITIONAL INFORMATION. 2. CONTRACTOR IS ADVISED THAT PAVING DESIGN RECOMMENDED BY GEOTECHNICAL ENGINEER IS BASED ON PREDICTED TRAFFIC LOADING AND ESTABLISHED STRENGTHS FOR PROPERLY INSTALLED PAVEMENTS. CONTRACTOR MUST COORDINATE REQUIRED GEOTECHNICAL TESTING & INSPECTION TO ENSURE THAT SUBGRADE AND PAVEMENT STRENGTH REQUIREMENTS ARE MET.</p>
X	X	X	4	EZ ROLL GRAVEL PAVING SYSTEM (NOT TO SCALE)

Operator: jr
Plotted: December 04, 2012 @ 11:24:36 a.m.
Drawing: E:\1206\COWS\0206_Water_CDs.dwg
User: 5206_jr.dwg, 5206_jose.dwg