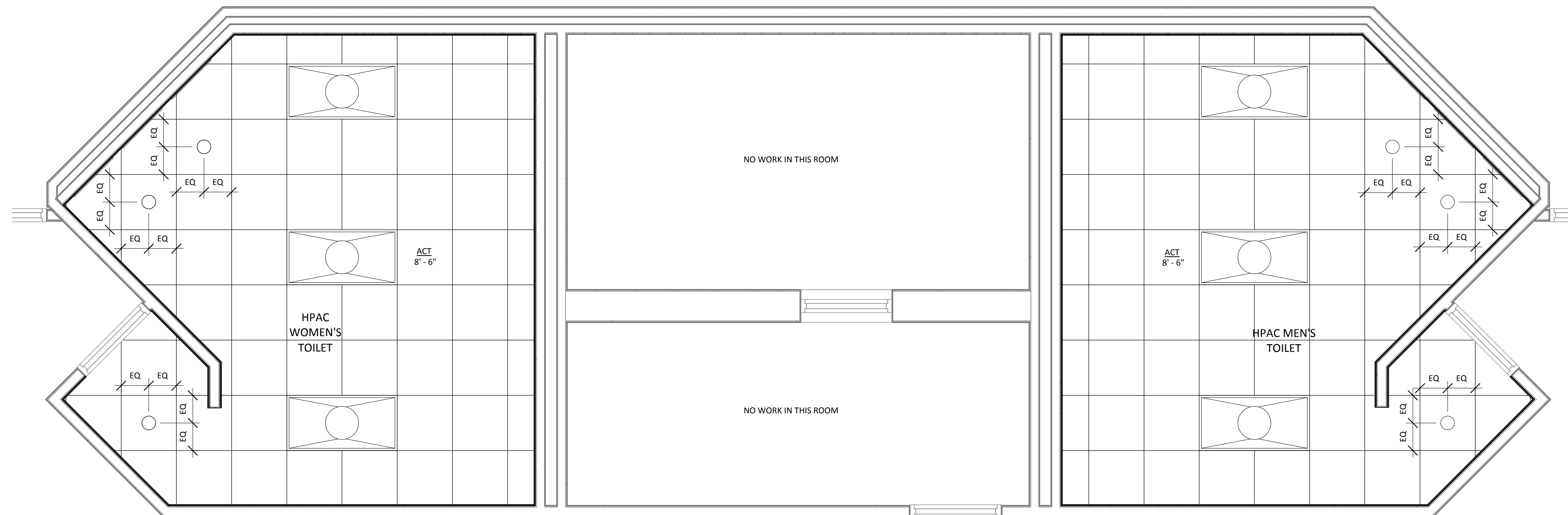


- ① DEMOLISH TOILET PARTITION
- ② DEMOLISH TOILET FIXTURE
- ③ DEMOLISH URINAL
- ④ DEMOLISH VANITY AND/OR SINKS
- ⑤ DEMOLISH FLOOR TILE AND PREPARE FLOOR TO ACCEPT NEW TILE FLOORING
- ⑥ DEMOLISH WALL TILE AND PREPARE WALL SURFACE TO ACCEPT NEW WALL TILE AND BACKER BOARD
- ⑦ DEMOLISH PAPER TOWEL DISPENSER
- ⑧ DEMOLISH SOAP DISPENSER
- ⑨ DEMOLISH MIRROR
- ⑩ DEMOLISH CEILING SYSTEM AND PREPARE FOR NEW SUSPENDED ACT CEILING
- ⑪ DEMOLISH EXISTING LIGHTING FIXTURES. ALL OTHER EXISTING CEILING FIXTURE TO BE RELOCATED (I.E. DIFFUSERS, SPEAKERS, ECT.)
- ⑫ DEMOLISH ALL OR PORTION OF WALL.
- ⑬ RE-FINISH EXISTING WALL VENT
- ⑭ DEMOLISH BULKHEAD
- ⑮ DEMOLISH DOOR AND / OR DOOR FRAME

1 HPAC RCP - DEMO
SCALE: 3/8" = 1'-0"



REFLECTED CEILING PLAN

GENERAL NOTES

1. INTERIOR CEILING HEIGHTS AS INDICATED ON THE REFLECTED CEILING PLANS.
2. REFER TO CONSTRUCTION FLOOR PLANS FOR REQUIRED COMPOSITION OF WALL CONSTRUCTION.
3. LOCATION OF LIGHTS, DIFFUSERS, AND RETURN AIR GRILLES TO BE COORDINATED BETWEEN REFLECTED CEILING PLANS, LIGHTING PLANS, AND HVAC PLANS AND FINAL LOCATION TO BE APPROVED BY ARCHITECT.
4. SEE SPECIFICATIONS FOR ADDITIONAL CEILING FINISH INFORMATION AND REQUIREMENTS. NOTIFY ARCHITECT WITH ANY DISCREPANCIES BETWEEN SPECIFICATION AND DRAWINGS.

REFLECTED CEILING PLAN LEGEND

CEILING FINISHES:

2'X2' LAY-IN ACOUSTICAL CEILING AND GRID SYSTEM

LIGHTING:

2X4 LIGHT FIXTURE

MECHANICAL:

- ☒ SUPPLY DIFFUSER
- ☒ RETURN AIR GRILL
- ☒ EXHAUST FAN

○ RECESSED LIGHT FIXTURE

CEILING FINISH KEY

NUMBER	TYPE	DETAIL DESCRIPTION
ACT	ACOUSTICAL CEILING TILE SYSTEM	24" X 24" COLOR: TBD

2 HPAC RCP - NEW CONSTRUCTION
SCALE: 3/8" = 1'-0"

REFLECTED CEILING PLAN

GENERAL NOTES

1. INTERIOR CEILING HEIGHTS AS INDICATED ON THE REFLECTED CEILING PLANS.
2. REFER TO CONSTRUCTION FLOOR PLANS FOR REQUIRED COMPOSITION OF WALL CONSTRUCTION.
3. LOCATION OF LIGHTS, DIFFUSERS, AND RETURN AIR GRILLES TO BE COORDINATED BETWEEN REFLECTED CEILING PLANS, LIGHTING PLANS, AND HVAC PLANS AND FINAL LOCATION TO BE APPROVED BY ARCHITECT.
4. SEE SPECIFICATIONS FOR ADDITIONAL CEILING FINISH INFORMATION AND REQUIREMENTS. NOTIFY ARCHITECT WITH ANY DISCREPANCIES BETWEEN SPECIFICATION AND DRAWINGS.

REFLECTED CEILING PLAN LEGEND

CEILING FINISHES:
2'X2' LAY-IN ACOUSTICAL CEILING AND GRID SYSTEM

LIGHTING:
2X4 LIGHT FIXTURE
○ RECESSED LIGHT FIXTURE

MECHANICAL:
☒ SUPPLY DIFFUSER
☒ RETURN AIR GRILL
☒ EXHAUST FAN

CEILING FINISH KEY

NUMBER	TYPE	DETAIL DESCRIPTION
ACT	ACOUSTICAL CEILING TILE SYSTEM	24" X 24" COLOR: TBD

USC Upstate - Renovations to Campus
Bathrooms and Buildings
800 University Way, Spartanburg, SC

GMC # AGRE140006

ISSUE FOR BID

ISSUE	DATE
ISSUE FOR BID	04/16/14

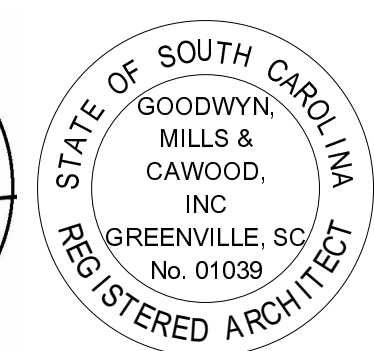
drawn by: WAS
checked by: MEK

GOODWYN MILLS CAWOOD

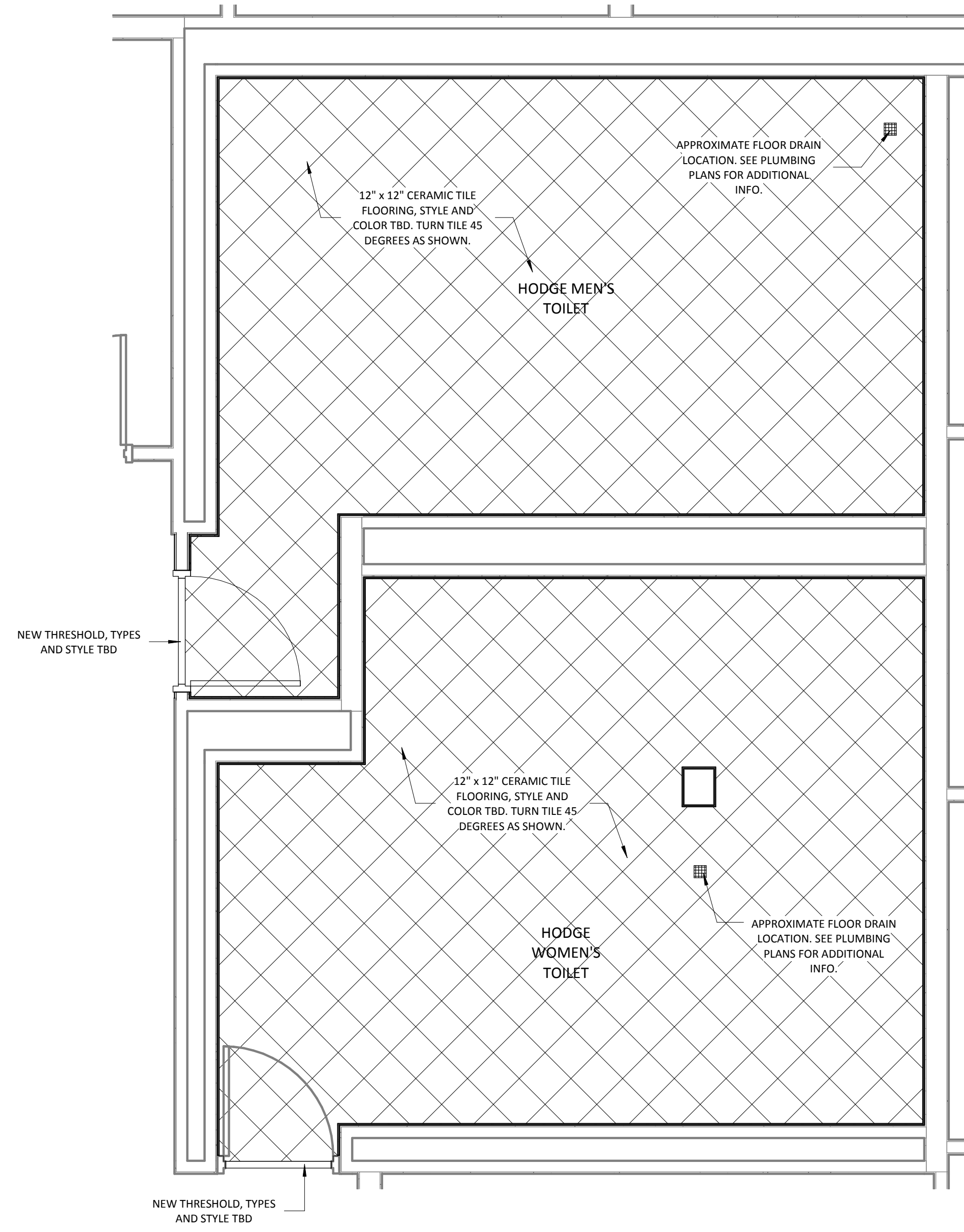
101 East Washington Street, Suite 200 | Greenville, SC 29601
Tel 864.527.0460 | GMCNETWORK.COM

HPAC - DEMO RCP AND
NEW CONSTRUCTION
RCP

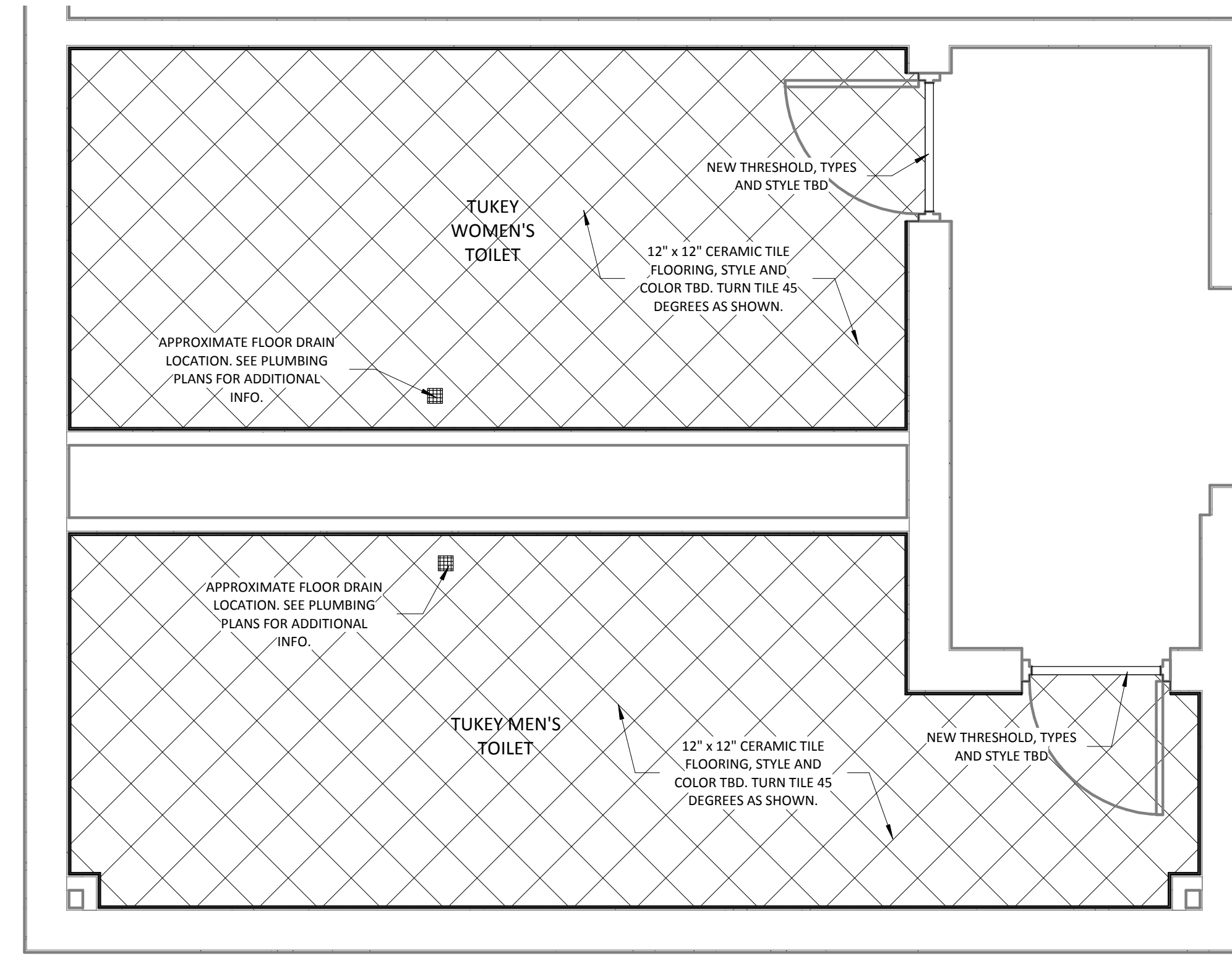
A-103
sheet of



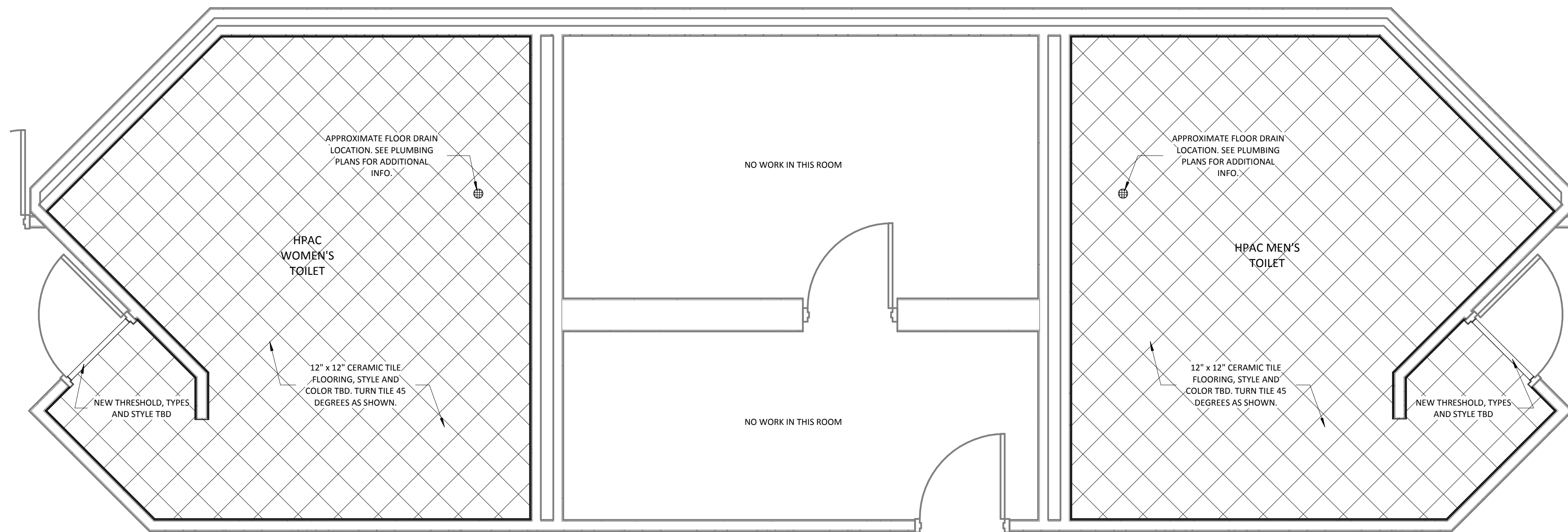
4/16/2014 11:25:41 AM



1 HODGE - FLOOR FINISH
SCALE: 3/8" = 1'-0"



2 TUKEY - FLOOR FINISH
SCALE: 3/8" = 1'-0"



3 HPAC - FLOOR FINISH
SCALE: 3/8" = 1'-0"



4/16/2014 11:25:43 AM

FLOOR FINISH PLANS

USC Upstate - Renovations to Campus
Bathrooms and Buildings
800 University Way, Spartanburg, SC

GMC # AGRE140006

ISSUE FOR BID

ISSUE DATE

ISSUE FOR BID 04/16/14

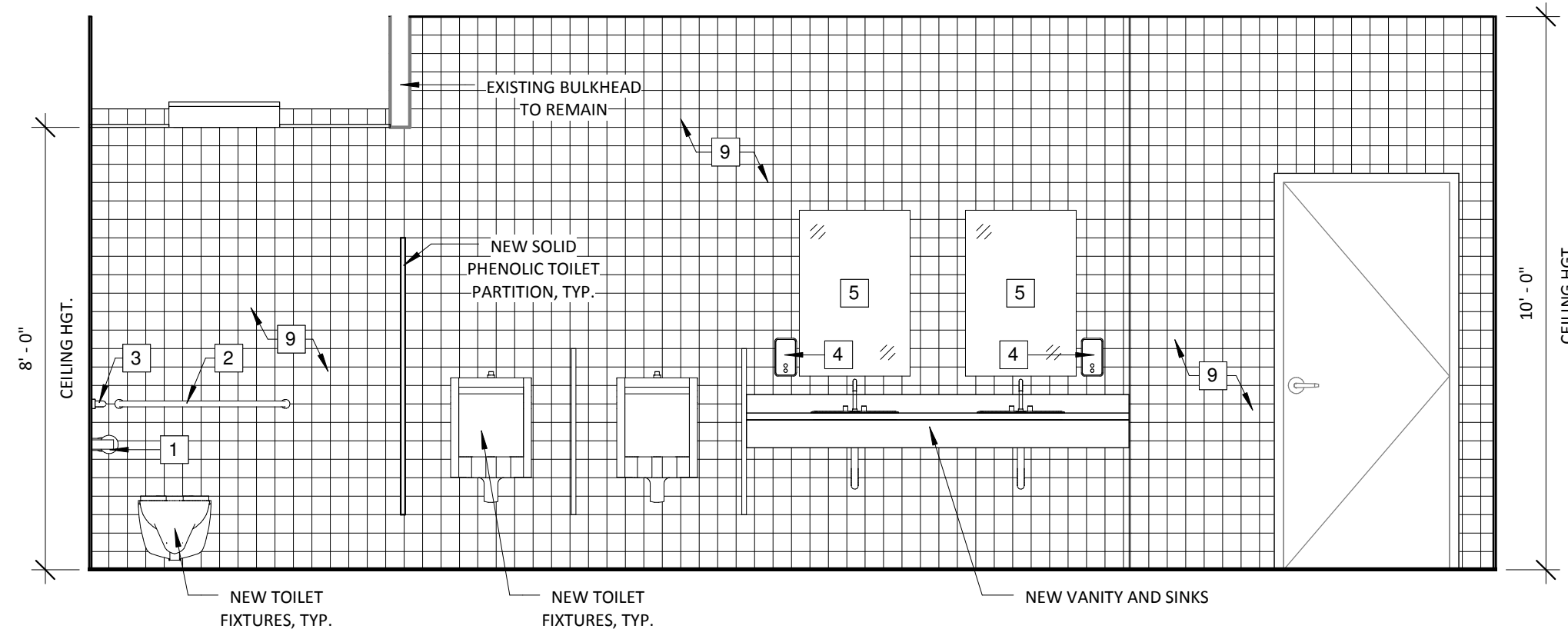
drawn by: JWS

checked by: MEK

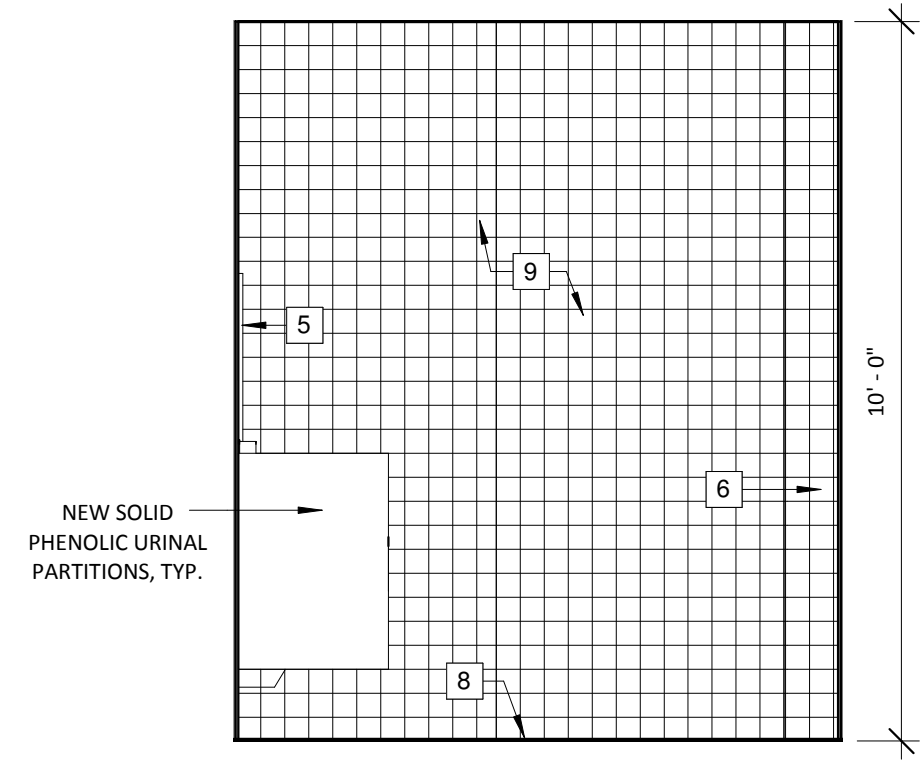
GOODWYN MILLS CAWOOD

101 East Washington Street, Suite 200 | Greenville, SC 29601
Tel 864.527.0460 | GMCNETWORK.COM

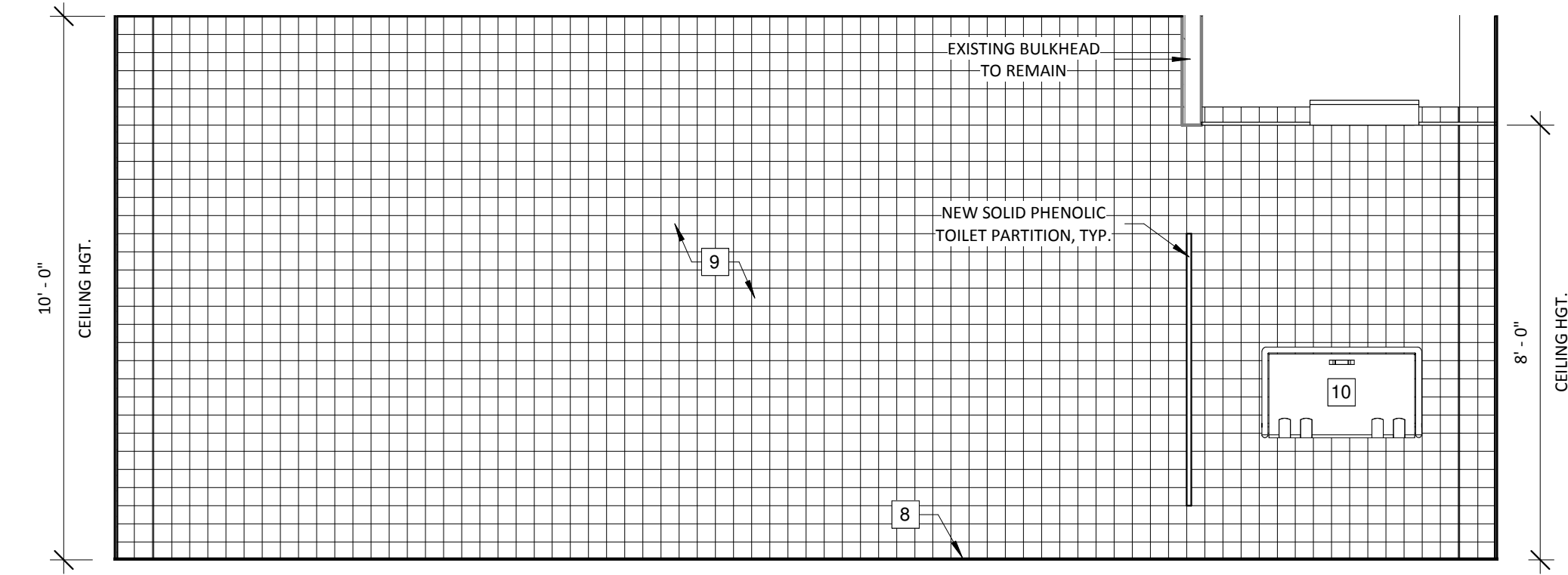
A-105
sheet of



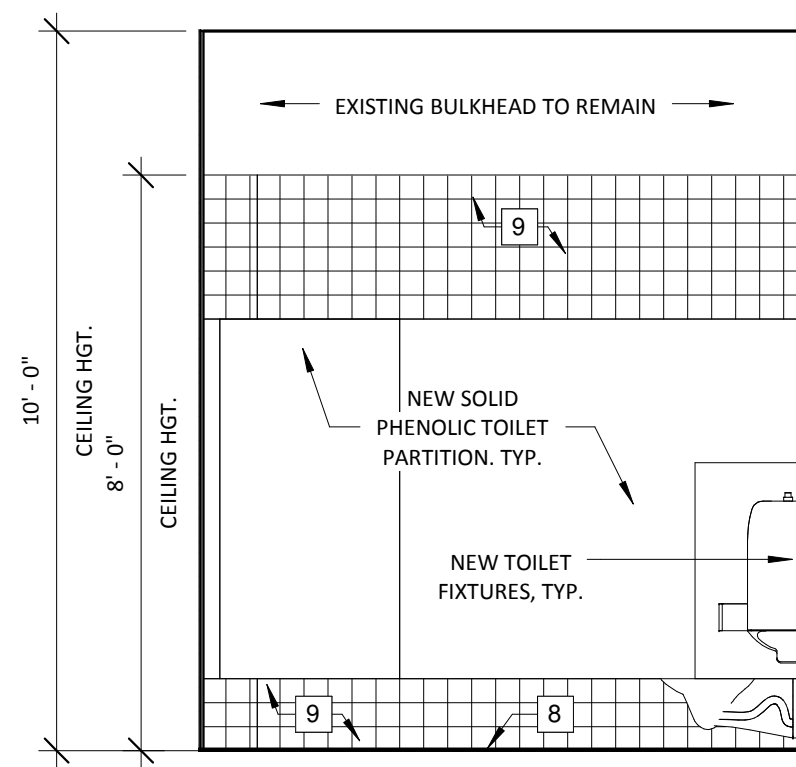
1 TUKEY - MENS ELEVATION
SCALE: 3/8" = 1'-0"



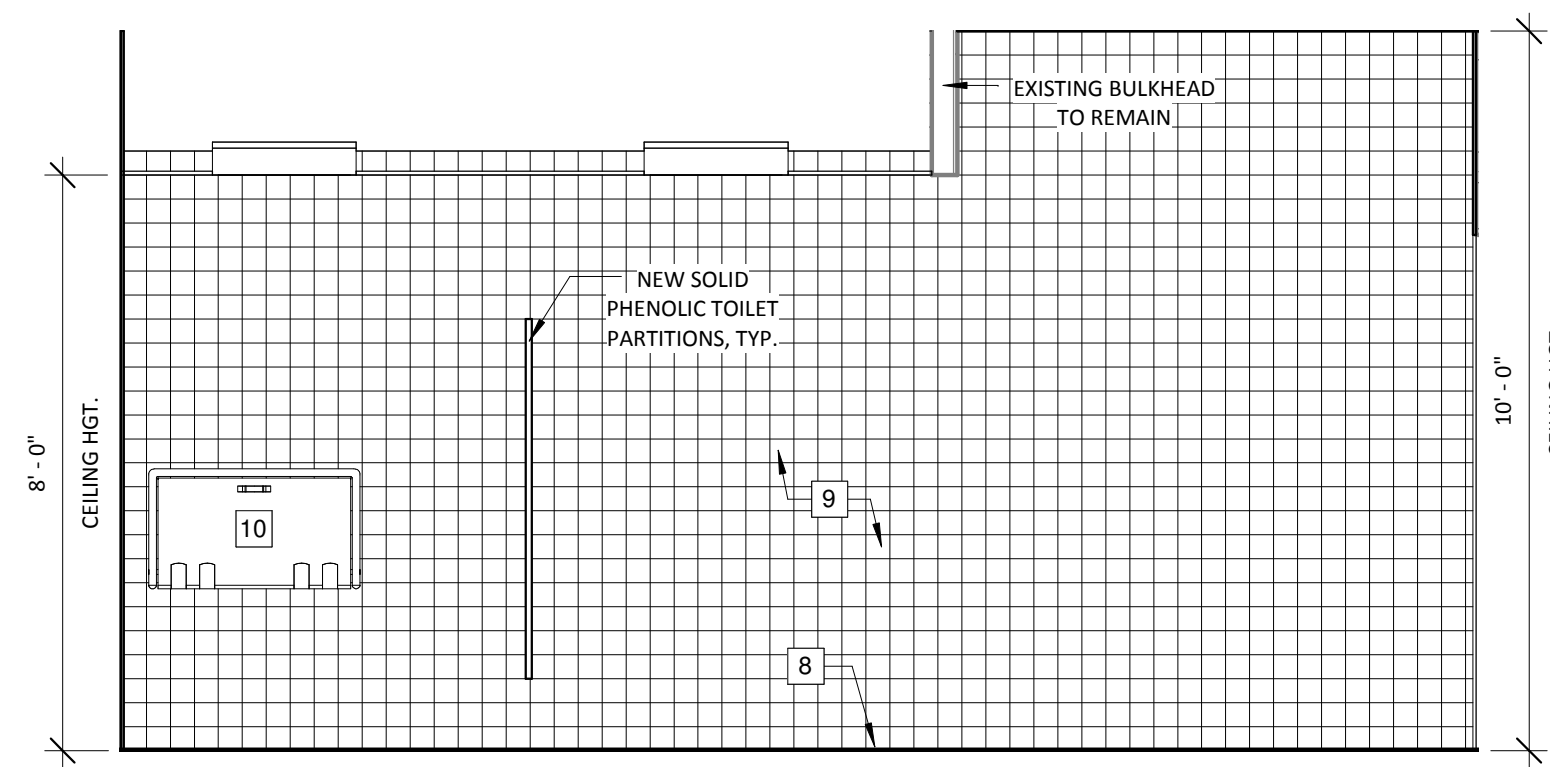
2 TUKEY - MENS ELEVATION
SCALE: 3/8" = 1'-0"



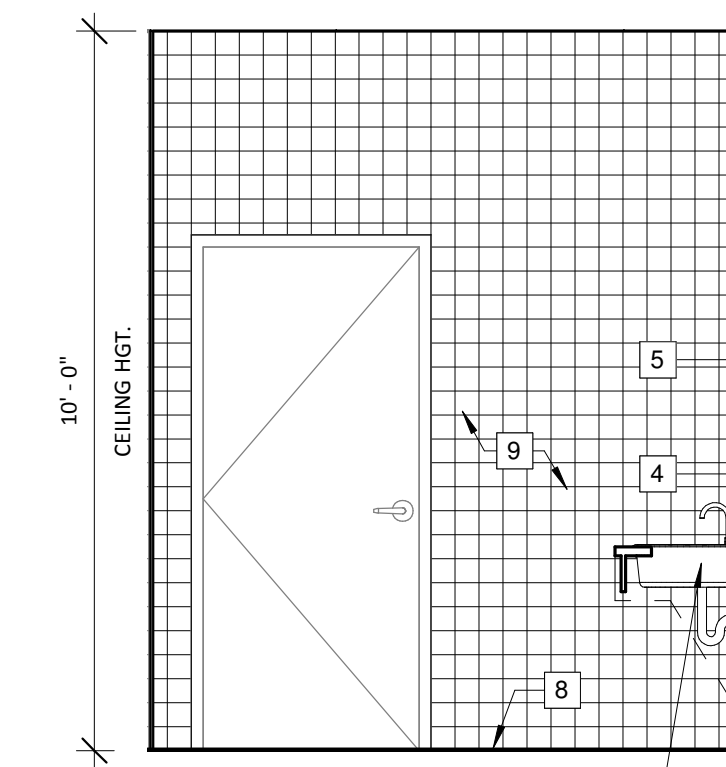
3 TUKEY - MENS ELEVATION
SCALE: 3/8" = 1'-0"



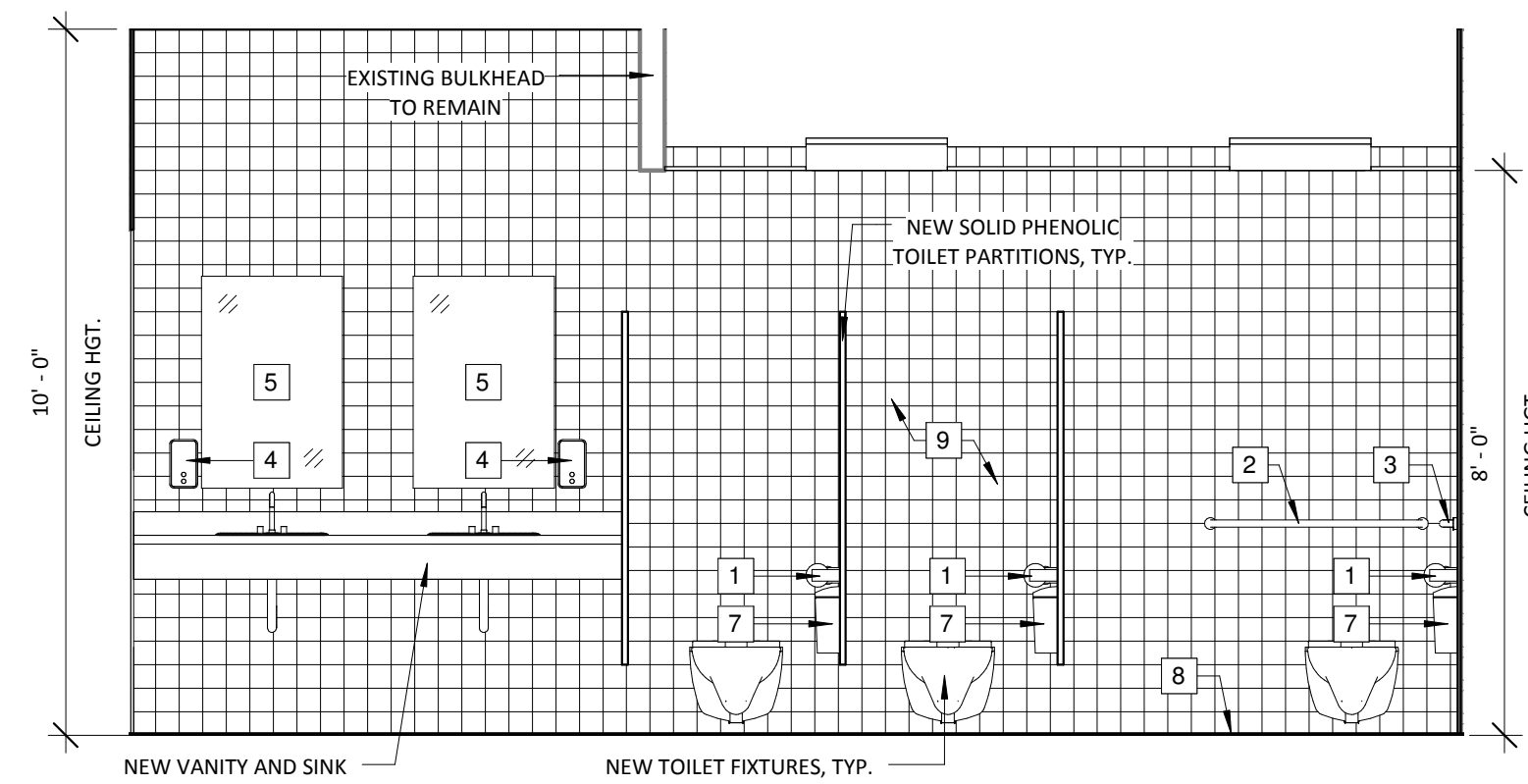
4 TUKEY - MENS ELEVATION
SCALE: 3/8" = 1'-0"



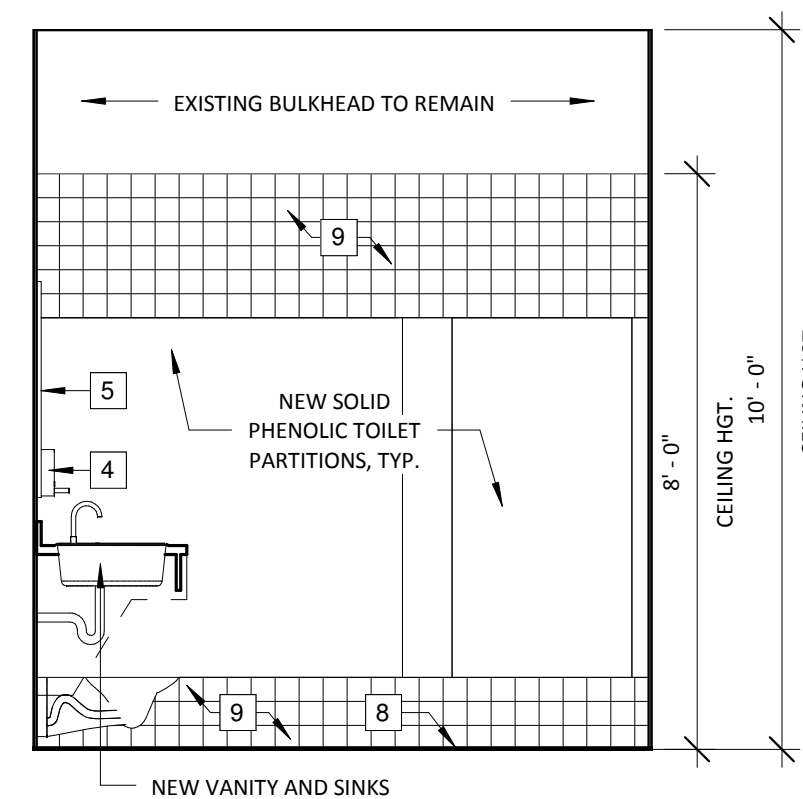
5 TUKEY - WOMENS ELEVATION
SCALE: 3/8" = 1'-0"



6 TUKEY - WOMENS ELEVATION
SCALE: 3/8" = 1'-0"



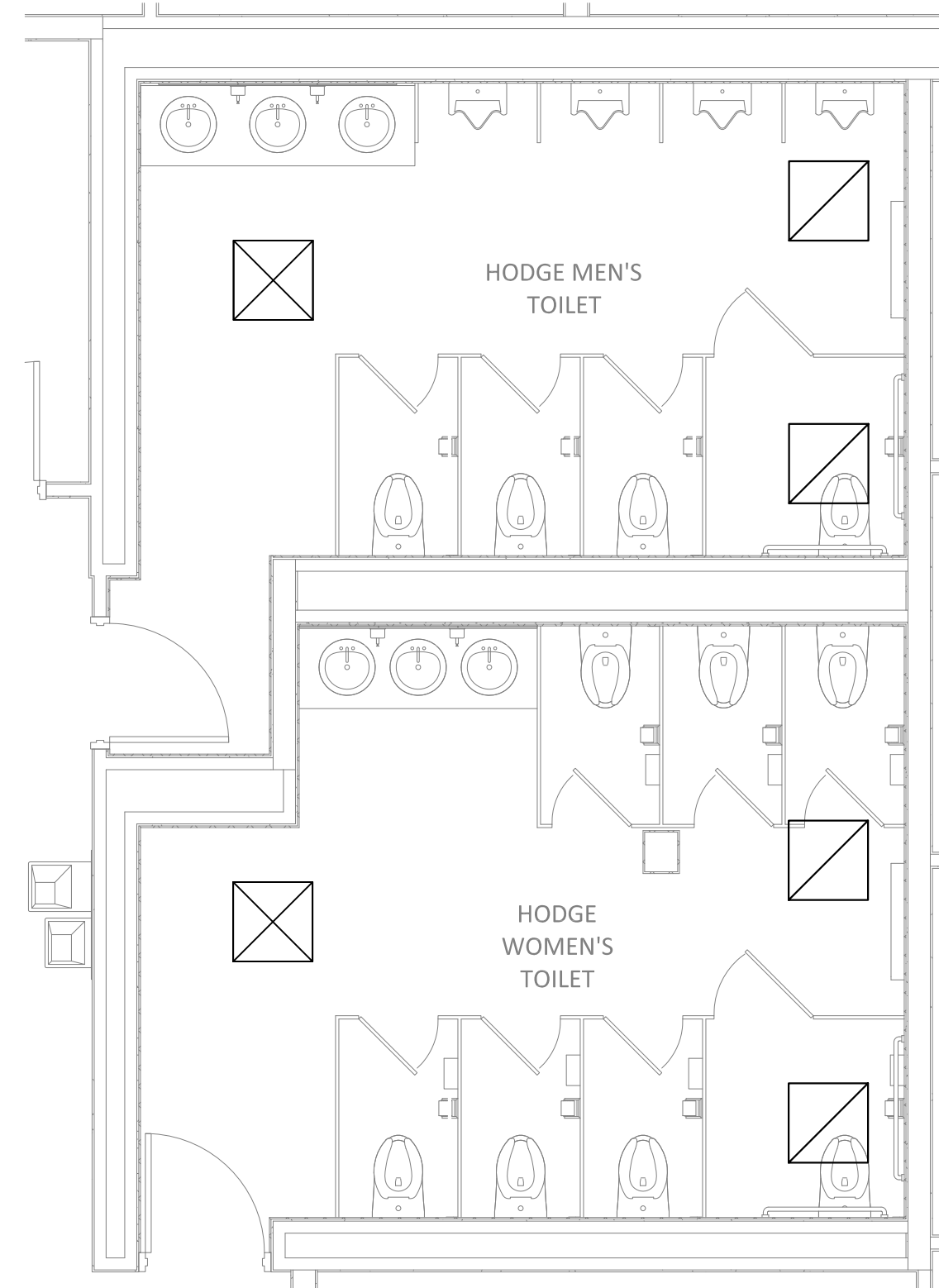
7 TUKEY - WOMENS ELEVATION
SCALE: 3/8" = 1'-0"



8 TUKEY - WOMENS ELEVATION
SCALE: 3/8" = 1'-0"

NEW CONSTRUCTION TOILET LEGEND	
1	TOILET PAPER DISPENSER, OFCI
2	36" GRAB BAR
3	42" GRAB BAR
4	SOAP DISPENSER, OFCI
5	24" w x 36" h MIRROR
6	NEW WALL, MATCH EXISTING FINISHES
7	SANITARY NAPKIN DISPOSAL, OFCI
8	NEW FLOOR TILE AND BASE, COLOR TBD
9	NEW WALL TILE, COLOR TBD, SEE ELEV.
10	NEW VANITY AND SINKS
11	NEW DOOR TO MATCH EXISTING

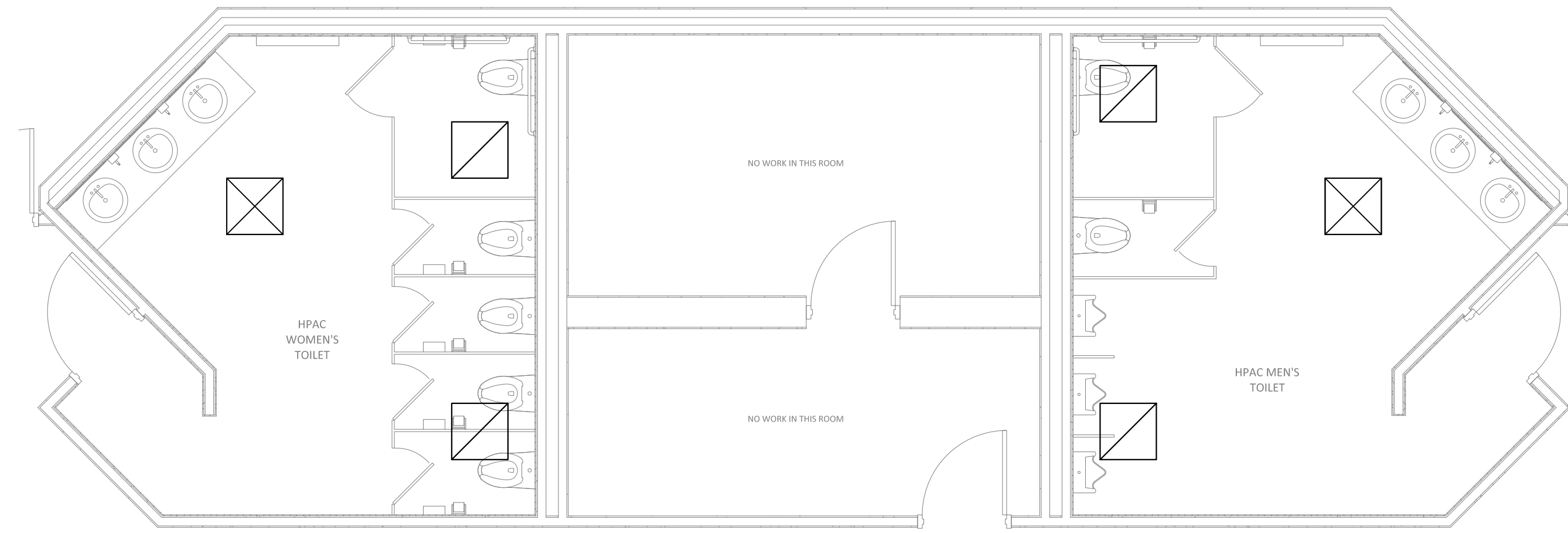




1 HODGE BUILDING HVAC CEILING PLAN
M-101 SCALE: 1/4"=1'-0"

PROJECT NOTES:

- THE HVAC SCOPE OF WORK IS TO REPLACE THE SUPPLY AND EXHAUST GRILLES.
- PROVIDE GRILLES BASED ON AIRFLOW PER THE SCHEDULE ON THIS SHEET.
- MEASURE AIRFLOW OF EXISTING SUPPLY AND EXHAUST PRIOR TO STARTING DEMOLITION.
- PROVIDE OWNER AND ENGINEER WITH THE EXISTING AIRFLOW QUANTITIES.
- THE FIXTURE COUNT WENT FROM:
 - 1.0 TO 8 IN THE MEN'S RESTROOM. ADJUST THE EXHAUST TO 75 CFM PER FIXTURE OR 600 CFM (300 CFM PER GRILLE).
 2. 6 TO 7 IN THE WOMEN'S RESTROOMS. ADJUST THE EXHAUST TO 600 CFM (300 CFM PER GRILLE).
 3. THIS LEAVES OVERALL EXHAUST AT SAME LEVEL AS EXPECTED.
- SHOULD THE EXHAUST LEVELS BE HIGHER OR LOWER THAN THOSE NOTED. NOTIFY OWNER AND ENGINEER.



2 HPAC BUILDING HVAC CEILING PLAN
M-101 SCALE: 1/4"=1'-0"

PROJECT NOTES:

- THE HVAC SCOPE OF WORK IS TO REPLACE THE SUPPLY AND EXHAUST GRILLES.
- PROVIDE GRILLES BASED ON AIRFLOW PER THE SCHEDULE ON THIS SHEET.
- MEASURE AIRFLOW OF EXISTING SUPPLY AND EXHAUST PRIOR TO STARTING DEMOLITION.
- PROVIDE OWNER AND ENGINEER WITH THE EXISTING AIRFLOW QUANTITIES.
- THE FIXTURE COUNT WENT FROM:
 - 5.1. 6 TO 5 IN THE MEN'S RESTROOM. LEAVE EXHAUST AT EXPECTED 75 CFM PER FIXTURE OR 450 CFM (225 CFM PER GRILLE).
 - 5.2. 6 TO 5 IN THE WOMEN'S RESTROOMS. LEAVE EXHAUST AT EXPECTED 75 CFM PER FIXTURE OR 450 CFM (225 CFM PER GRILLE).
 - 5.3. THIS LEAVES OVERALL EXHAUST AT SAME LEVEL AS EXPECTED.
- SHOULD THE EXHAUST LEVELS BE HIGHER OR LOWER THAN THOSE NOTED. NOTIFY OWNER AND ENGINEER.

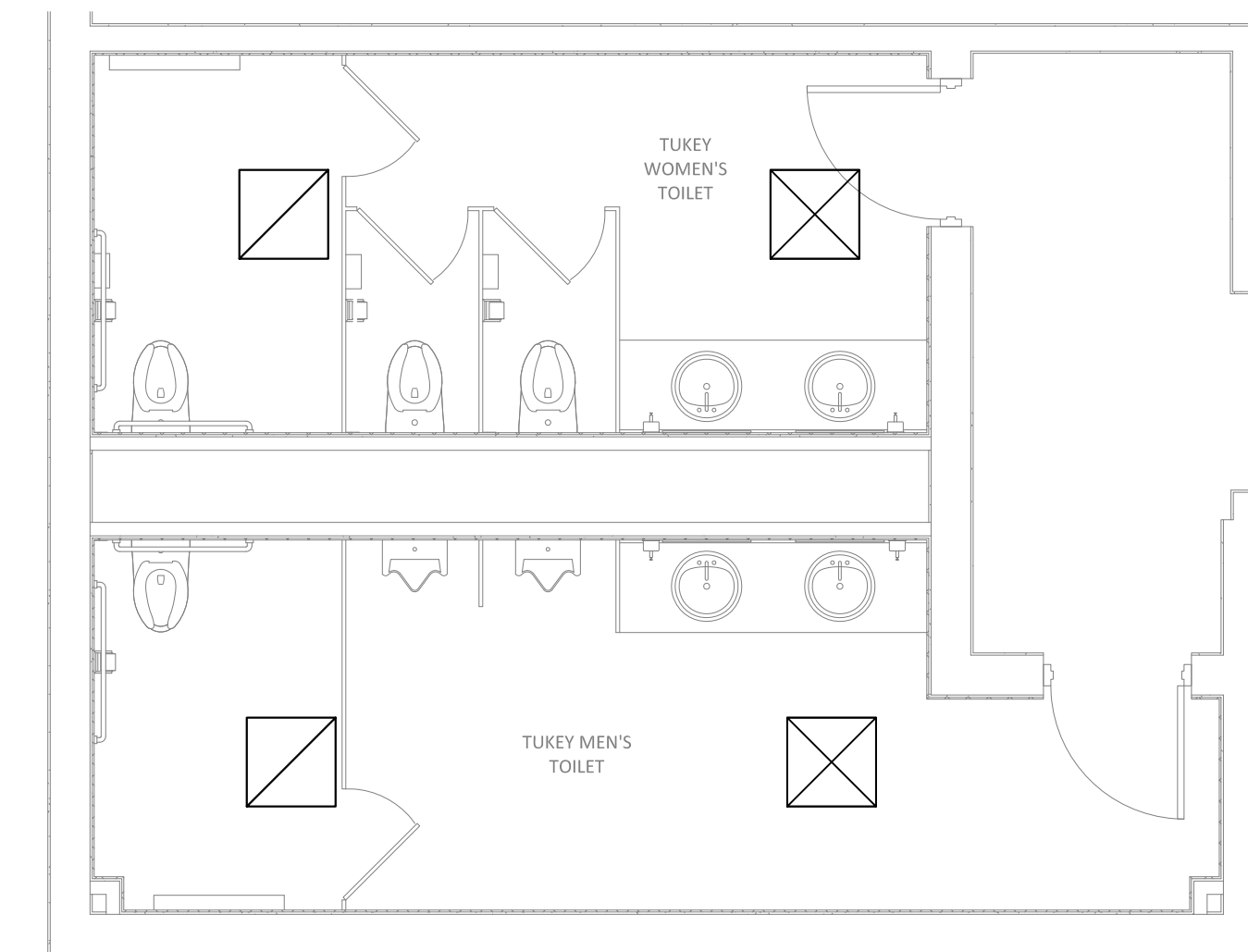
AIR DEVICE SCHEDULE								
MARK	PRICE MODEL NO.	MODULE SIZE	NECK SIZE	DEVICE TYPE	SERVICE	FRAME STYLE	CFM RANGE	ACCESSORIES
A	SCD	12" x 12"	6"	SQUARE CONE	SUPPLY	LAY-IN/SURFACE	80-125	2
B	SCD	12" x 12"	8"	SQUARE CONE	SUPPLY	LAY-IN/SURFACE	140-250	2
C	SCD	24" x 24"	6"	SQUARE CONE	SUPPLY	LAY-IN/SURFACE	80-125	2
D	SCD	24" x 24"	8"	SQUARE CONE	SUPPLY	LAY-IN/SURFACE	140-250	2
E	SCD	24" x 24"	10"	SQUARE CONE	SUPPLY	LAY-IN/SURFACE	225-500	2
F	SCD	24" x 24"	12"	SQUARE CONE	SUPPLY	LAY-IN/SURFACE	325-725	2
G	PDDR	12" x 12"	6"	PERFORATED	RET/EXH	LAY-IN/SURFACE	< 125	2
H	PDDR	24" x 24"	8"	PERFORATED	RET/EXH	LAY-IN/SURFACE	< 250	2
J	PDDR	24" x 24"	10"	PERFORATED	RET/EXH	LAY-IN/SURFACE	< 500	2
K	PDDR	24" x 24"	12"	PERFORATED	RET/EXH	LAY-IN/SURFACE	< 725	2
L	PDDR	24" x 24"	PLENUM	PERFORATED	RET/EXH	LAY-IN/SURFACE	< 1050	2
M	80DAL	8" x 8"	-	EGG CRATE	EXH/TRANS	SURFACE	< 450	2
N	80DAL	12" x 12"	-	EGG CRATE	EXH/TRANS	SURFACE	< 900	
P	620DAL	40" x 12"	-	EGG CRATE	EXH/TRANS	SURFACE	< 3000	
R	SDC	22" x 10"	-	LOUVER	EXH	SPIRAL DUCT	< 800	
S	SDC	10" x 6"	-	LOUVER	SUPPLY	SPIRAL DUCT	100-350	7, 8
T	SDB 50	48" LONG	7"	LINEAR	SUPPLY	LAY-IN	130-220	2-SLOT
V	620DAL	10" x 6"	-	LOUVER	SUPPLY	SURFACE	100-350	
W	ARCD	-	6"	ROUND CONE	SUPPLY	DUCT MOUNTED	75-175	1,5

- NOTES:**
- SUPPLY DEVICES SHALL HAVE VOLUME DAMPERS OR DEFLECTORS.
 - EXHAUST DEVICES SHALL HAVE DAMPERS
 - NOISE LEVEL AT DESIGN FLOW SHALL NOT EXCEED NC 30
 - COLOR SHALL BE OFF-WHITE UNLESS NOTED OTHERWISE (CONFIRM WITH ARCH DWG)
 - CALL-OUTS WITH ASTERISK (*) HAVE SURFACE MOUNT, FLAT FRAMES. CONTRACTOR SHOULD CONFIRM FRAME STYLE WITH ARCHITECTURAL CEILING PLANS.
 - CALL OUTS WITH SMALL S AFTER THE LETTER INDICATE RETURNS WITH SOUND TRAP ELBOWS
 - LOUVER GRILLES TO HAVE BLADES PARALLEL TO LONG DIMENSION
 - EXHAUST GRILLES TO HAVE DAMPERS FOR BALANCING

ACCESSORIES AND CONSTRUCTION:

- | | |
|-----------------------------------|--|
| 1. ALUMINUM CONSTRUCTION | 5. COLOR SHALL BE WHITE |
| 2. STEEL CONSTRUCTION | 6. COLOR SHALL BE MILL FINISH |
| 3. ADJUSTABLE AIR THROW DEFLECTOR | 7. ADJUST SIZE AS REQUIRED FOR DUCT SIZE OR FLOW |
| 4. DOUBLE DEFLECTION VANES | 8. PAINTABLE |

NOTE: THIS IS A STANDARD SCHEDULE AND MAY INCLUDE DEVICES NOT REQUIRED ON THIS PROJECT



3 TUKEY BUILDING HVAC CEILING PLAN
M-101 SCALE: 1/4"=1'-0"

PROJECT NOTES:

- THE HVAC SCOPE OF WORK IS TO REPLACE THE SUPPLY AND EXHAUST GRILLES.
- PROVIDE GRILLES BASED ON AIRFLOW PER THE SCHEDULE ON THIS SHEET.
- MEASURE AIRFLOW OF EXISTING SUPPLY AND EXHAUST PRIOR TO STARTING DEMOLITION.
- PROVIDE OWNER AND ENGINEER WITH THE EXISTING AIRFLOW QUANTITIES.
- THE FIXTURE COUNT WENT FROM:
 - 5.1. 4 TO 3 IN THE MEN'S RESTROOM. LEAVE EXHAUST AT EXPECTED 75 CFM PER FIXTURE OR 300 CFM (300 CFM PER GRILLE).
 - 5.2. 4 TO 3 IN THE WOMEN'S RESTROOMS. LEAVE EXHAUST AT EXPECTED 75 CFM PER FIXTURE OR 300 CFM (300 CFM PER GRILLE).
 - 5.3. THIS LEAVES OVERALL EXHAUST AT SAME LEVEL AS EXPECTED.
- SHOULD THE EXHAUST LEVELS BE HIGHER OR LOWER THAN THOSE NOTED. NOTIFY OWNER AND ENGINEER.

DEMOLITION NOTE:

REFER TO THE FOLLOWING ARCHITECTURAL DEMOLITION PLANS FOR DEMOLITION REQUIREMENTS:

- A-101; HODGE BUILDING
- A-102; HPAC BUILDING
- A-104; TUKEY BUILDING

CAVINESS LAMBERT ENGINEERING

Caviness Lambert Engineering, LLC
508 East North Street
Greenville, SC 29601
P: (864) 242-5844
F: (864) 250-4567
www.cl-e.com

USC Upstate - Renovations to Campus
Bathrooms and Buildings
Enter address here

GMC # AGRE140006

BID SET

HODGE, HPAC, & TUKEY
BUILDINGS RESTROOM
HVAC PLAN

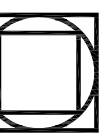
M-101
sheet of

ISSUE / DATE

BID SET

04/16/14

GOODWYN MILLS CAWOOD



101 East Washington Street | Greenville, SC 29601
Tel 864.527.044 GMCNETWORK.COM

